

Figures and caption

Through Walls and Layers. Cross Sections in Art and Science

2 May – 30 June 2019



Fig. 1

Stefan Gritsch (*1951)

ORGAN, 1990-2019

Acrylic volumes (two-piece), 14 x 9.5 x 9 cm

© Courtesy of the artist



Fig. 2

Peter Emch (*1945)

Stieleiche / Quercus robur (split version), 2000

print from the cycle: **Holzdrucke**, woodcut on

Japan paper

133 x 97 cm

Graphische Sammlung ETH Zürich / © Peter Emch

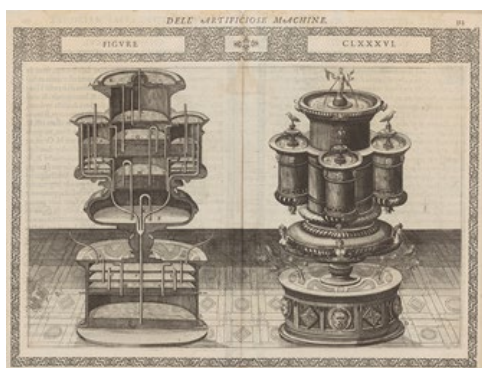


Fig. 3

Copper engraving after Agostino Ramelli (1531-

1600), from: **Le diverse et artificiose machine del**

Capitano Agostino Ramelli, Paris, 1588

27.5 x 36.4 cm

Graphische Sammlung ETH Zürich



Fig. 4

Maria Sibylla Merian (1647-1717)

Hand-coloured copper engraving from:

***Veränderingen der Surinaamsche Insecten / De
Europische Insecten***, Amsterdam, 1730

51.5 x 37.1 cm

Graphische Sammlung ETH Zürich



Fig. 5

Agate slice, polished

from Thomas Mann's desk 18 x 6.5 x 2 cm

Thomas Mann Archives ETH Zurich

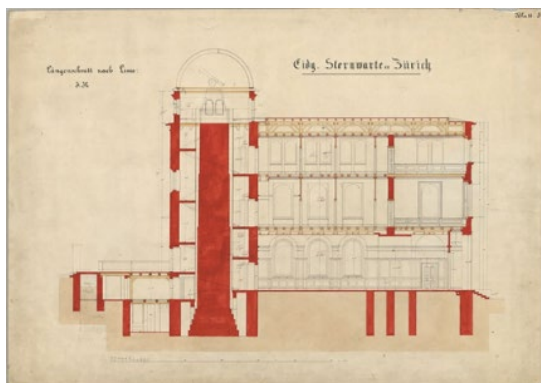


Fig. 6

Gottfried Semper (1803-1879)

***Observatory of the Swiss Federal Polytechnic in
Zurich***, 1861

North-South section, pencil, pen and ink,
watercolour painting in red, ochre and yellow on
drawing paper, 62.2 x 87.6 cm

gta-Archiv, Institute for the History and Theory of
Architecture, ETH Zurich

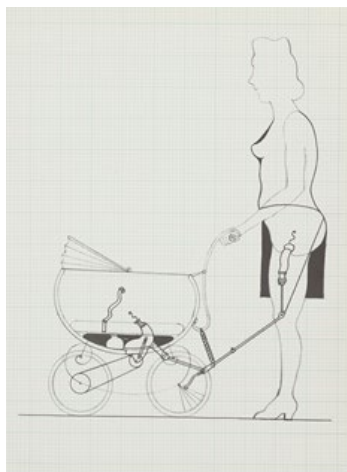


Fig. 7

Tomi Ungerer (1931-2019)
Print from the series *Fornicon*, 1970
Offset in black on graph paper
38 x 29 cm

Graphische Sammlung ETH Zürich / © Tomi Ungerer

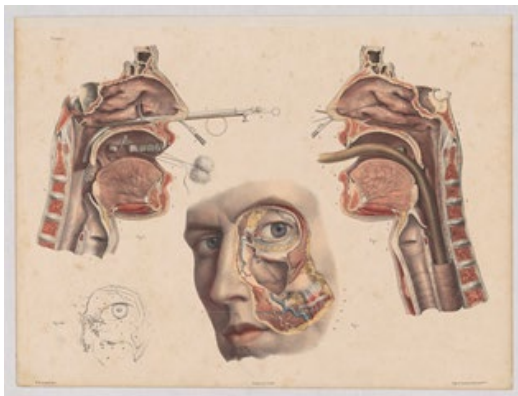


Fig. 8

Nicolas Henri Jacob (1782-1771)
Hand coloured lithograph after a drawing by
Nicolas Henri Jacob (1782-1771), from:
Jean Baptiste Marc Bourgery: *Médecine
Opératoire*, Paris, 1840
31.2 x 42.1 cm

Graphische Sammlung ETH Zürich

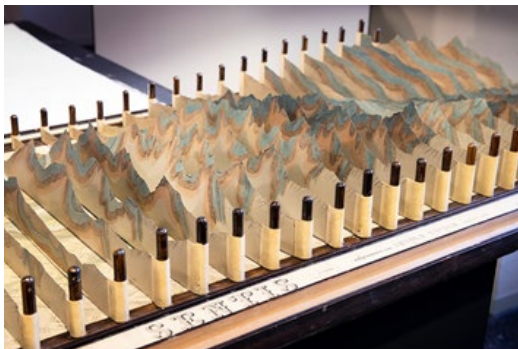


Fig. 9

Arnold Escher (1807-1872) and
Albert Heim (1849-1937)
Profile relief of the Sântis Mountains, 19th c.
Scale: 1:25,000

Earth Science Collections ETH Zurich

The images are solely for use in connection with the **Through Walls and Layers. Cross Sections in Art and Science** exhibition 2 May – 30 June 2019.

High-resolution images can be found on: <https://gs.ethz.ch/en/media/>

Login: presse (user name), grsethz (password)