

IMAGE SELECTION „LINES FROM EAST ASIA. JAPANESE AND CHINESE ART ON PAPER”

Exhibition dates: 17 August – 13 November 2022

Curated by Susanne Pollack, Graphische Sammlung ETH Zürich, and Hans Bjarne Thomsen, Section for East Asian Art, University of Zurich



Fig. 1

Kitagawa Utamaro
Woman Reading a Letter, from the series
“Ten Classes of Women’s Physiognomy,”
1791-92
Woodblock print with colors on mica-
ground, 340 x 234 mm

Graphische Sammlung ETH Zürich,
inv. D 29468



Fig. 2

Utagawa Hiroshige
*Cherry Blossoms at Night along
Nakanochō in Yoshiwara*, from the series
“Famous Places in the Eastern Capital,”
1834
Woodblock print with colors, 243 x 373 mm

Graphische Sammlung ETH Zürich,
inv. D 29052

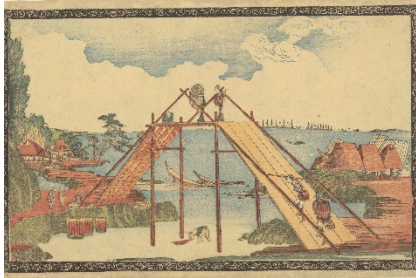


Fig. 3

Katsushika Hokusai
Benten Shrine in Haneda, from an untitled series of Western-style landscapes, 1803
Woodblock print with colors, 211 x 333 mm

Graphische Sammlung ETH Zürich,
inv. D 29050



Fig. 4

Anonymous
Butterflies, from a Chinese export-album, ca. 1900
Watercolors on pith paper, 255 x 340 mm

Graphische Sammlung ETH Zürich,
inv. 2020.438



Fig. 5

Tōshūsai Sharaku
Ichikawa Komazō III as Shiga Daishichi, 1794
Woodblock print with colors on mica-ground, 360 x 233 mm

Graphische Sammlung ETH Zürich,
inv. D 29487



Fig. 6

Kubo Shunman
Shōshi, from the series "Immortals of the Moon," 1804
Woodblock print with colors, 197 x 177 mm

Graphische Sammlung ETH Zürich,
inv. D 29517

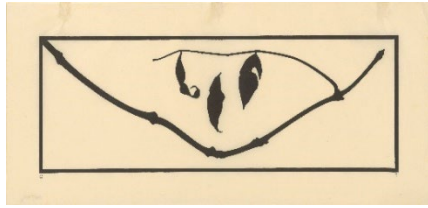


Fig. 7

Oskar Tröndle
Falling Leaf, ca. 1930
Woodblock print, 126 x 336 mm

Graphische Sammlung ETH Zürich,
inv. D 38173



Fig. 8

Gyokuha
Hitachiyama and Umegatani (Hitachiyama Umegatani), 1899
Woodblock print with colors, 365 x 728 mm

Graphische Sammlung ETH Zürich,
inv. 2021.18



Fig. 9

Peter Behrens
The Kiss, 1898
Woodblock print with colors, 272 x 216 mm

Graphische Sammlung ETH Zürich,
inv. D 837



Fig. 10

Katsushika Hokusai, after
Cover image from a Leporello with Illustrations after Shunga Book Illustrations by Hokusai, ca. 1900
Woodblock print with colors on mica-ground, 250 x 170 mm

Private collection

The images are solely for use in connection with the exhibition "*Lines from East Asia. Japanese and Chinese Art on Paper*", 17 August – 13 November 2022.

High-resolution images can be found on: <https://gs.ethz.ch/en/media/>

Login: presse (username), grsethz (password)